

INFRARED CAMERA FOR LEAK DETECTION AND REPAIR



S C A N

|

D E T E C T

|

R E P A I R

GasFindIR enables you to:

- > Scan thousands of components per SHIFT
- > Spot small leaks from several feet away
- > Safely monitor big leaks from hundreds of feet away
- > Detect leaks in moving tank cars

For the first time, an infrared (IR) imaging camera - **GasFindIR** - allows you to spot methane and other volatile organic compound (VOC) gas leaks quickly and easily. Capable of rapidly scanning large areas and even miles of pipeline, this highly specialized infrared camera delivers real-time thermal images of gas leaks. These leaks appear as "black smoke" onscreen allowing you to "see" fugitive gas emissions. **It's Smart.**

Using a revolutionary technology, GasFindIR inverts the physics of fugitive VOC gas leaks. What was once invisible is now clear and present — and recordable to any off-the-shelf video recorder for easy archiving, documenting or emailing. **It's Innovative.**



New Infrared Leak Detection

GasFindIR for

GasFindIR is a real-time infrared camera, scanning at 30 Hz or 30 images per second. This greatly increases productivity by allowing workers to scan miles of piping from a moving vehicle or pan wide-angle for broad views of piping systems without image distortion or smear.

It's Productive.

GasFindIR is designed specifically for use in harsh industrial environments, and operates in a wide temperature range of 5°F to 122°F (-15°C to +50°C), with a 40G industrial shock rating. ***It's Rugged.***

GasFindIR is manufactured by FLIR Systems, the world's oldest and largest infrared camera producer. Now, the extensive research and development of the world's most accomplished IR engineering team is available to you. ***It's Ingenious.***

GET CERTIFIED! GasFindIR Training



Developed and delivered by expert instructors from the Infrared Training Center (ITC) - the world's largest infrared camera training organization. This 4.5 day training course will teach you:

- > How to best use your GasFindIR camera
- > What environmental conditions will require camera adjustments
- > How to create reports and documentation
- > Steps to a 'infrared smart LDAR' program at your facility

Students passing a written exam will receive GasFindIR operator training certification.

GasFindIR Camera Revolutionizes Inspection & Repair (LDAR)!

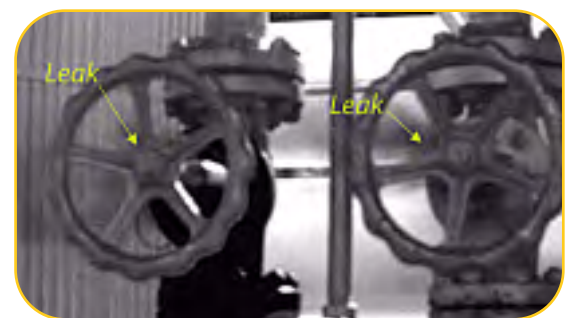
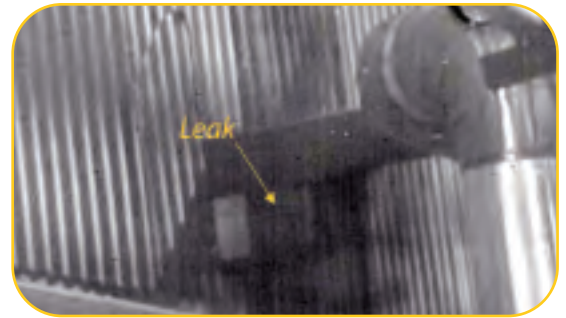
Finds even small fugitive gas emissions quickly and easily.

Seeing is believing...

Watch this video and see for
yourself what GasFindIR sees!

Visit us at:
www.flirthermography.com/smartLDAR

ThermaCAM®
GasFindIR™



This training is ideal for anyone who has purchased a GasFindIR, or for those who want to learn more before they buy.

Class sizes are small to ensure a low student-to-instructor ratio.
So please register now.

**To register, please call Betty Taylor at
1 800 254 0631**

Training Dates & Locations:

For complete GasFindIR
Training Course
information, please visit
www.infraredtraining.com.

Imaging Performance	
Field of View	22° with 25mm lens
Focus near	<0.2m
Focusing	Manual
Thermal sensitivity	80 mK @ 30°C
F-number	2.3
Detector	
Type	Focal Plane Array (FPA), InSb, 320x240 pixels
Spectral range	3 - 5µm
Time constant	16 ms, user selectable
Power Input	
Voltage	6V
Power consumption	<6 W typ.
Physical Characteristics	
Weight (with battery and lens)	2 kg or less (4.6 lbs.)
Color	Black
Size in (LxHxW)	10"x 5.2"x 5.7" (254x 132x145mm)
Interface	Tripod mounting UNC 1/4", rotation safe
Available Lenses	
Field of View	25 mm (22°) 50 mm (11°) 100 mm (5.5°)
Environmental	
Operating temperature range	-15°C to +50°C
Storage temperature range	-40° to + 70°C
Bump	40g, MIL-STD-810F
Vibration	7.15g, MIL-STD-810F
EMC	EN 50081-2 (Generic emission) EN 50082-2 (Generic immunity)
Humidity	20-80% (non condensing) IEC 359
Image Specifications	
Image storage	Hand-held personal video recorder, commercial, off-the-shelf
Image out	NTSC/RS-170, S-video
Camera Control	RS-232, push button on camera
Connectors/function	C-video, PAL, NTSC, S-video and Serial RS-232

GasFindIR is lab tested to detect:

> Benzene

> Butane

> Ethane

> Ethylbenzene

> Ethylene

> Heptane

> Hexane

> Isoprene

> MEK

> Methane

> Methanol

> MIBK

> Octane

> Pentane

> 1-Pentane

> Propane

> Propylene

> Toluene

> Xylene