

DALSA 1M150-SA (Prelim.)

PRELIMINARY.

This information is subject to change without notice.

DALSA's Stop Action cameras capture crisp images without smear or distortion by using short exposure times and electronically shuttering all pixels simultaneously.

A small, robust camera combining 1-megapixel resolution, high speed and "Stop Action" imaging.

The 1M150-SA is our newest area scan camera for industrial machine vision and traffic management. The camera uses a one-megapixel (1024 x 1024), CMOS image sensor capable of running at up to 150 frames per second (fps) at full resolution. Frame rates over 100,000 fps can be achieved through windowing.

Unlike regular CMOS imagers, our camera features an electronic global non-rolling shutter for "Stop Action" (SA) imaging, allowing for smear-free capture of fast moving objects. And its LinLog™ response allows up to 120dB of intrascene dynamic range—making it ideal for outdoor exposures such as traffic.

Programmable features and diagnostics are accessible through the Camera Link™ MDR26 connector. The camera's small body and robustness make it perfect for the wear and tear of industrial environments.

Note: Not appropriate for applications requiring scientific image quality, such as high-precision metrology, medical imaging, or microscopy. For these applications, consider a premium image quality camera such as our 1M30.



Features

- "Stop Action" (SA) imaging
- 1-Megapixel (1024 x 1024) resolution, 150fps
- LinLog™ output response
- CMOS image sensor with ROI windowing ability
- Camera Link™ interface
- 8 bit output from 10 bit digitization

Specifications

Resolution	1024 x 1024
Pixel Size	10.6µm x 10.6µm
Aperture	10.9mm x 10.9mm
Lens Mount	C-mount
Max. Line/Frame Rate	150fps
Data Rate	2x80MHz
Data Format	Camera Link
Responsivity	Up to 11.2DN/(nJ/cm²)
Dynamic Range	48dB Linear, up to 120dB LinLog
Nominal Gain Range	1, 4, or 16x
Size	55x55x45mm
Mass	220g
Operating Temp	0-40°C
Power Supply	5V
Power Dissipation	<2W
Regulatory Compliance	CE
Example Part Number	DS-21-001M0150

Applications

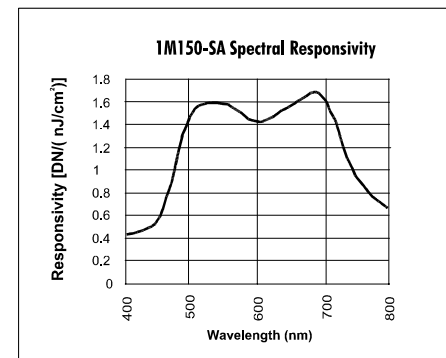
- Robotics control
- Traffic management
- Welding inspection

Sensor

The 1M150-SA (Prelim.) uses a high-performance megapixel CMOS image sensor.

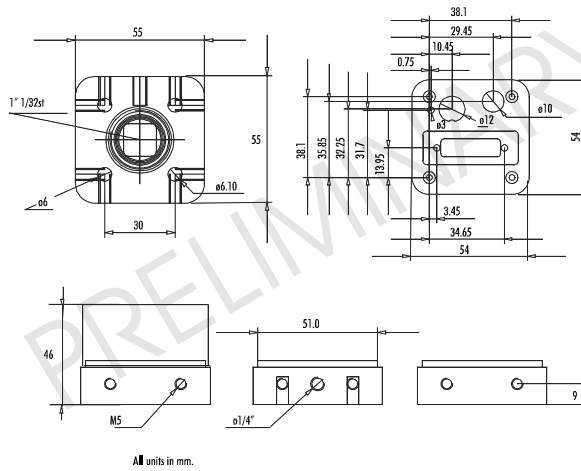
Connectors

Control	MDR26, Camera Link
Data	Shared with Control
Power	Binder 712
Other	none



28-Aug-03
03-70-00185-00
www.dalsa.com

Mechanical Dimensions



For More Information

For more detailed information on this and other products, including pinouts, timing, and signal descriptions, see the user manual. Contact your local rep or visit our website at <http://vfm.dalsa.com/products>.

DALSA Worldwide Sales

605 McMurray Rd
 Waterloo, ON N2V 2E9
 Canada
 Tel: 519 886 6000
 Fax: 519 886 8023
www.dalsa.com
sales@dalsa.com

DALSA European Sales

Breslauer Str. 34
 D-82194 Gröbenzell (Munich)
 Germany
 Tel: +49 - 8142 - 46770
 Fax: +49 - 8142 - 467746
www.dalsa.com
europe@dalsa.com

DALSA Asia Pacific Sales

Space G1 Building, 4F
 2-40-2 Ikebukuro
 Toshima-ku, Tokyo 171-0014
 Japan
 +81 3 5960 6353 (phone)
 +81 3 5960 6354 (fax)
www.dalsa.com
asia@dalsa.com



28-Aug-03
 03-70-00185-00
www.dalsa.com

This information subject to change without notice.